

NorthBay Subdivision Stages 4,5,6&16C Prices and Plans



Prices for Stages 4, 5,6 &16C

These prices are subject to change

View Website <northbay.net.au> for up to date price

list Contact us at: info@northbay.net.au

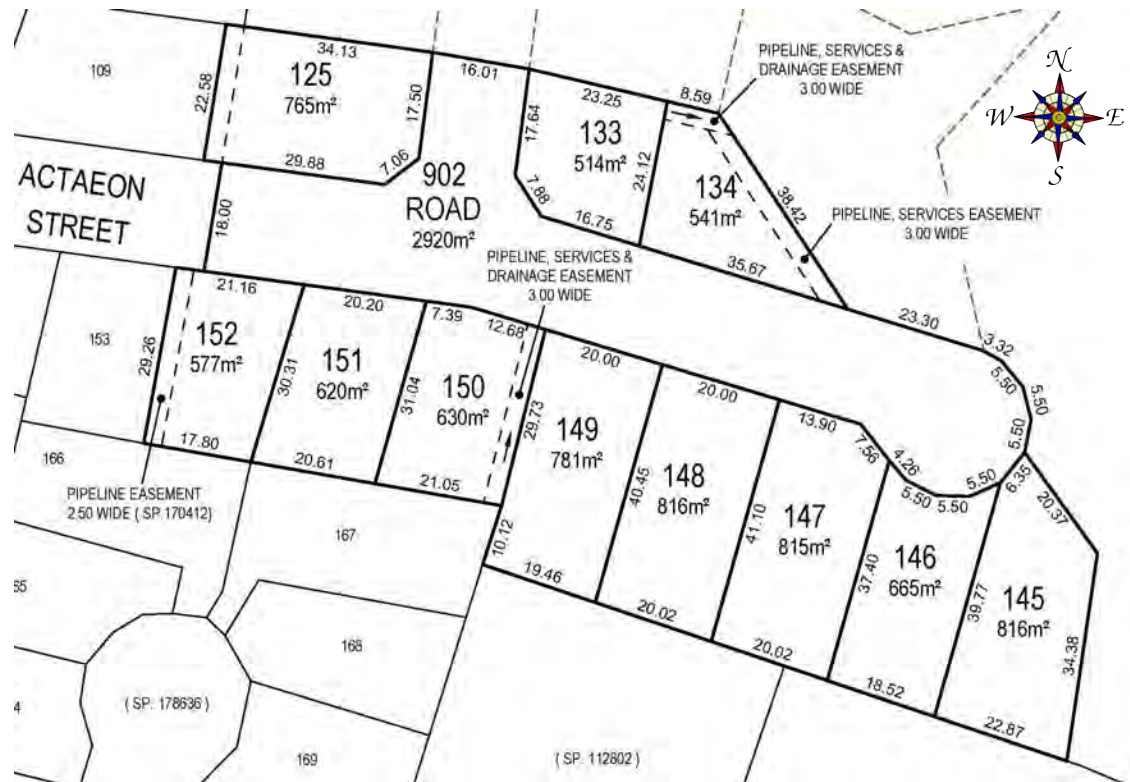
Phone: 0455511588



*For most up to date prices view at: northbay.net.au
Dec. 2022*

North Bay Subdivision Stage 4 Prices and Plans Titles have issued

View at northbay.net.au



152 - Sold

151 - Sold

150 - Sold

149 - Sold

147 - Sold

148 - Sold

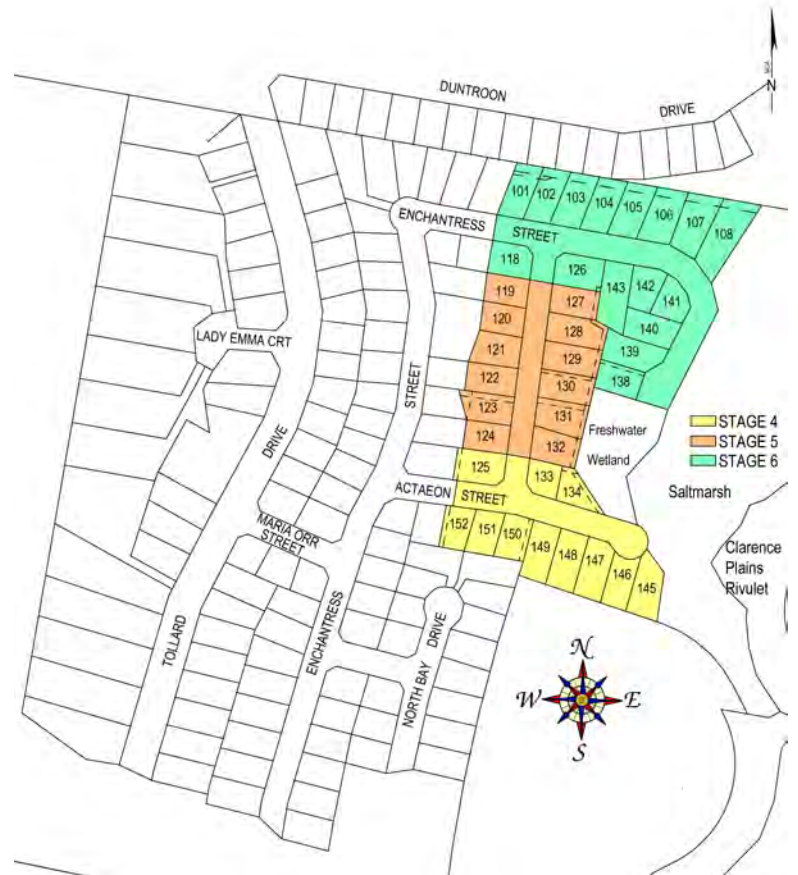
145 - Sold

125 - Sold

133 - Under Contract

134 - Under Contract

146 - Offers Over \$390,000

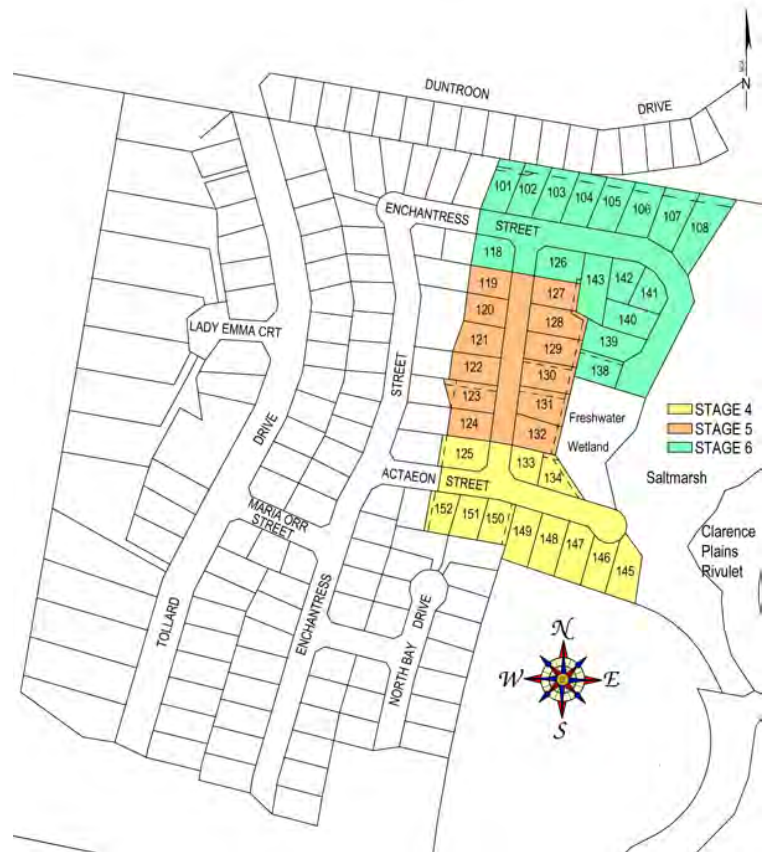


For most up to date prices view at northbay.net.au

North Bay Subdivision Stage 5 Prices and Plans Titles have been issued

View at northbay.net.au

- 119 - Sold
- 120 - Under Contract
- 121 - Offers over \$345,000
- 122 - Sold
- 123 - Offers over \$295,000
- 124 - Sold
- 127 - Sold
- 128 - Under Contract
- 129 - Sold
- 130 - Sold
- 131 - Offers Over \$395,000
- 132 - Offers Over \$390,000

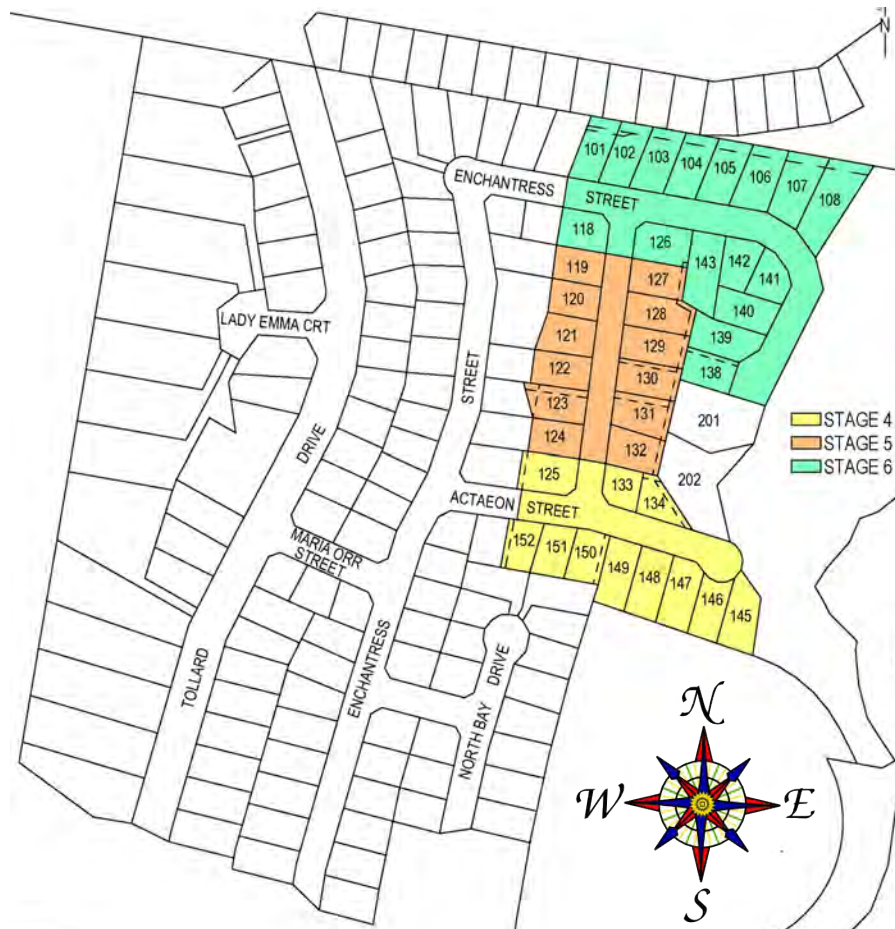
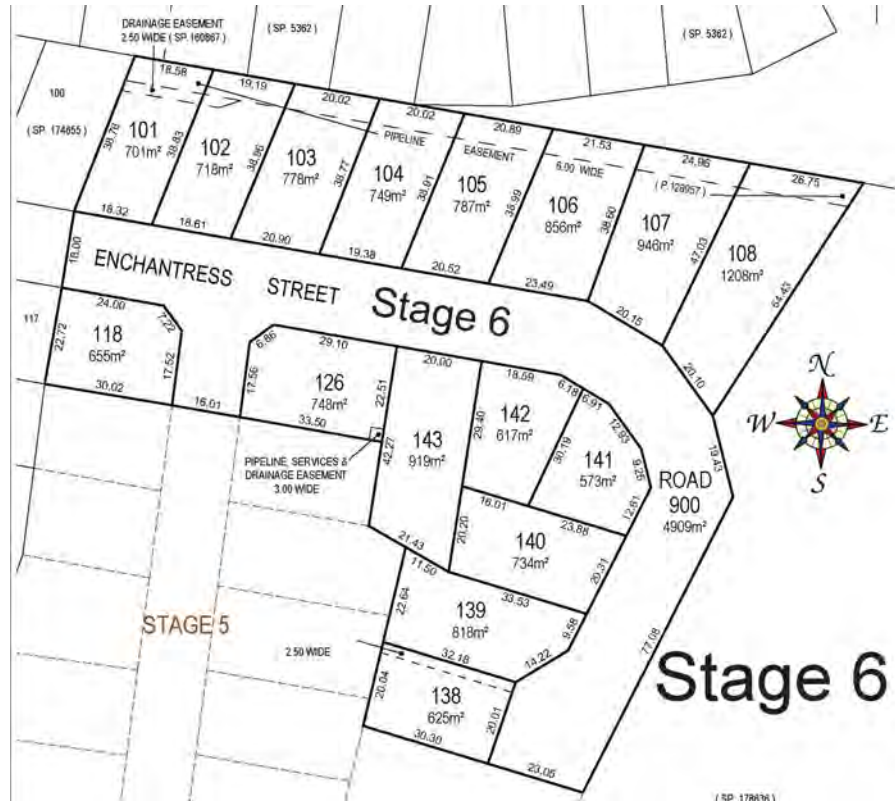


For most up to date prices view at: northbay.net.au

NorthBaySubdivision Stage 6 Prices and Plans Titles have been issued

View at northbay.net.au

- 101 - Offers Over \$350,00
- 102 - **Under Contract**
- 103 - **Sold**
- 104 - **Sold**
- 105 - For Future Release
- 106 - For Future Release
- 107 - For Future Release
- 118 - **Sold**
- 126 - **Sold**
- 143 - Offers Over \$440,000
- 142 - Offers Over \$380,000
- 141 - Offers Over \$400,000
- 140 - For Future Release
- 139 - For Future Release
- 138 - For Future Release



For most up to date prices view at: northbay.net.au

North Bay Subdivision Stage 16C and 17 Prices and Plans



[View at northbay.net.au](http://northbay.net.au)

STAGE 16C

- Lot 17 **SOLD**
- Lot 18 **SOLD**
- Lot 19/4 Lady Emma Court - \$480,000
- Lot 20 **SOLD**
- Lot 21 **SOLD**
- Lot 22 **Unavailable**

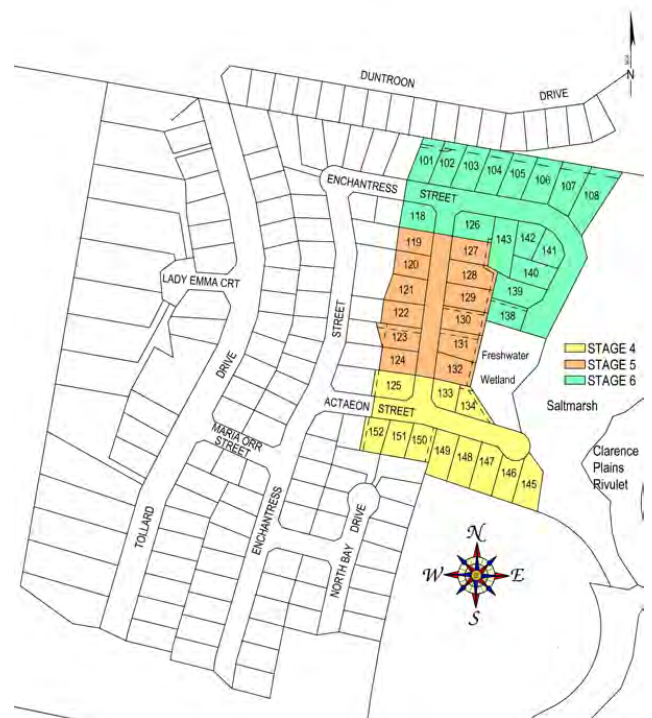


For most up to date prices view at: northbay.net.au

Directions to North Bay Subdivision

Heading from city on the South Arm Highway turn right at the traffic lights and continue to the southern end of Tollard Drive

(About 15 mins. From CBD)



For most up to date prices view at: northbay.net.au