

## North Bay Subdivision Stages 4,5,6&16C Prices and Plans



Prices for Stages 4, 5,6 &16C

These prices are subject to change

View Website <[northbay.net.au](http://northbay.net.au)> for up to date price

list Contact us at: [info@northbay.net.au](mailto:info@northbay.net.au)

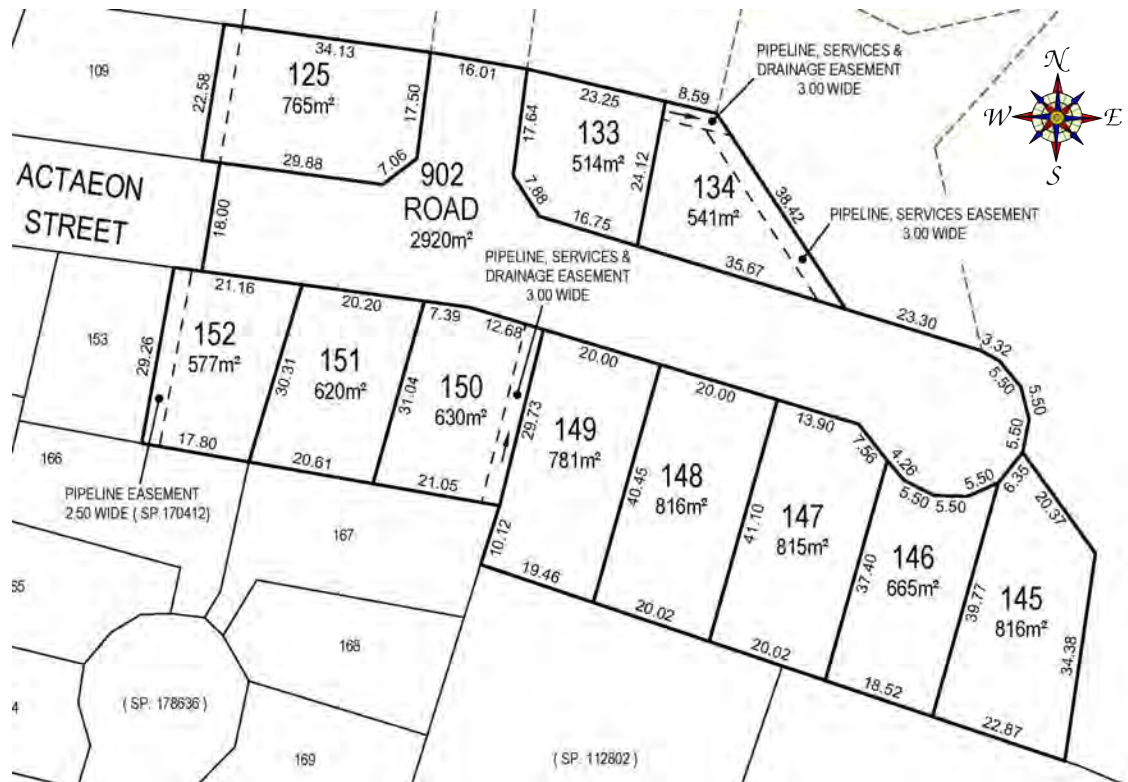
Phone: 0455511588



*For most up to date prices view at: [northbay.net.au](http://northbay.net.au)  
June 2026*

# North Bay Subdivision Stage 4 Prices and Plans Titles have issued

View at [northbay.net.au](http://northbay.net.au)



152 - Sold

151 - Sold

150 - Sold

149 - Sold

147 - Sold

148 - Sold

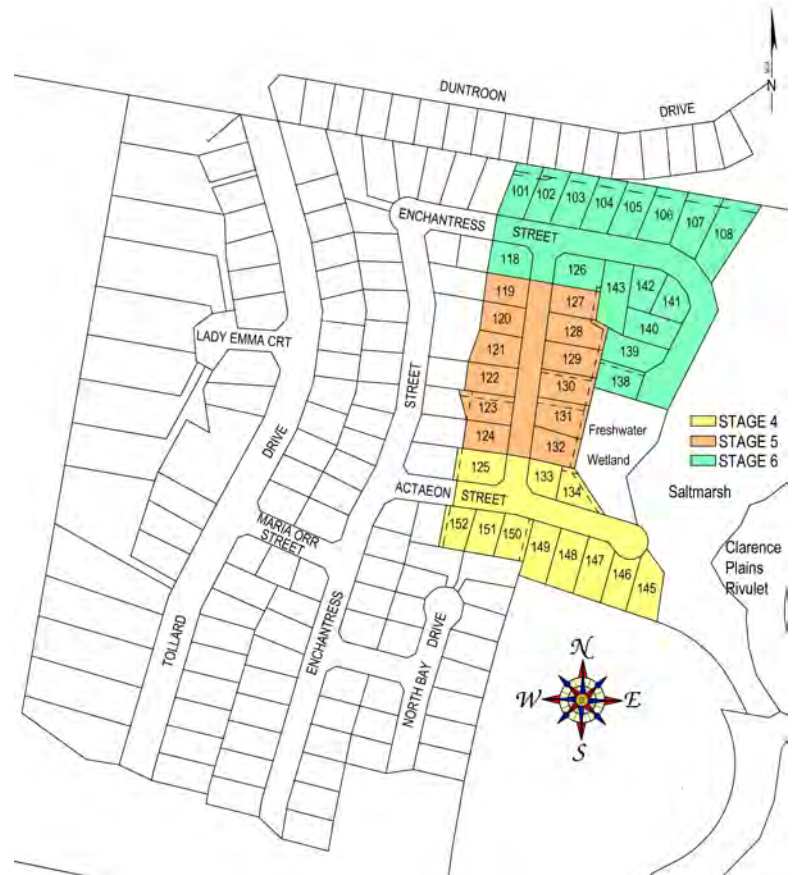
145 - Sold

125 - Sold

133 - Sold

134 - Sold

146 - \$330,000



For most up to date prices view at [northbay.net.au](http://northbay.net.au)

# North Bay Subdivision Stage 5 Prices and Plans Titles have been issued

View at [northbay.net.au](http://northbay.net.au)

- 119 - Sold
- 120 - Sold
- 121 - \$345,000
- 122 - Sold
- 123 - \$345,000
- 124 - Sold
- 127 - Sold
- 128 - Sold
- 129 - Sold
- 130 - Sold
- 131 - \$380,000
- 132 - \$375,000

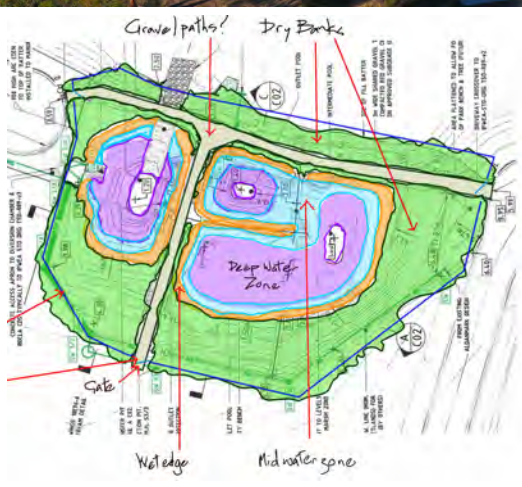
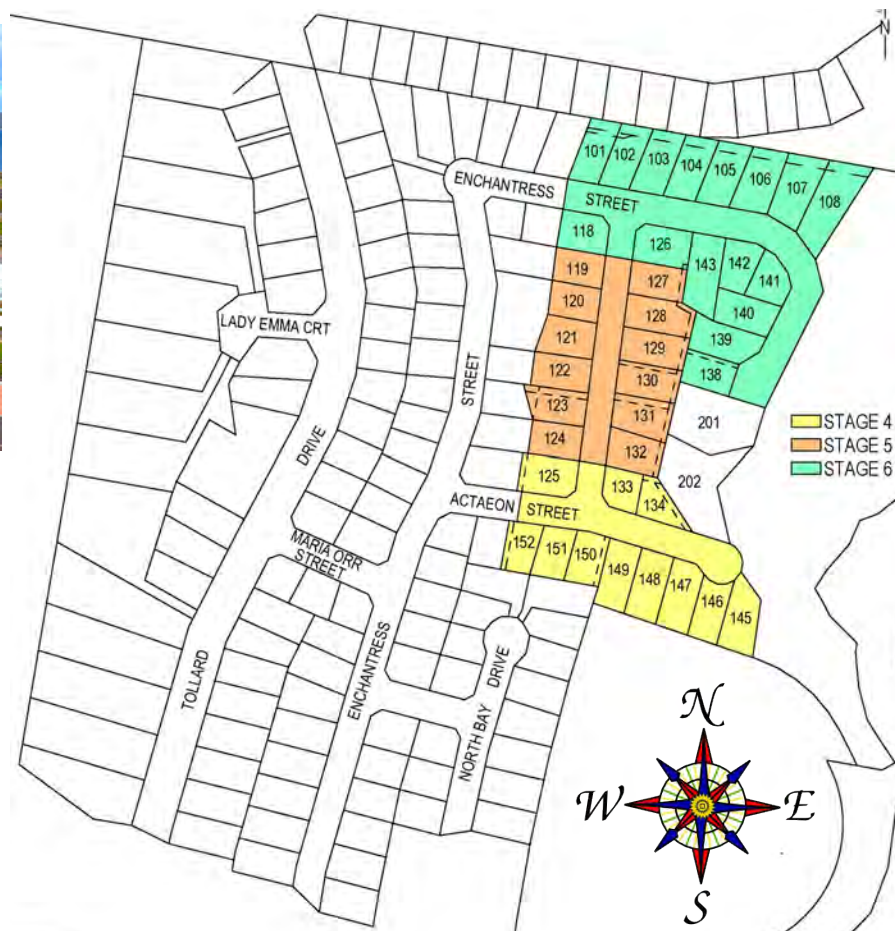
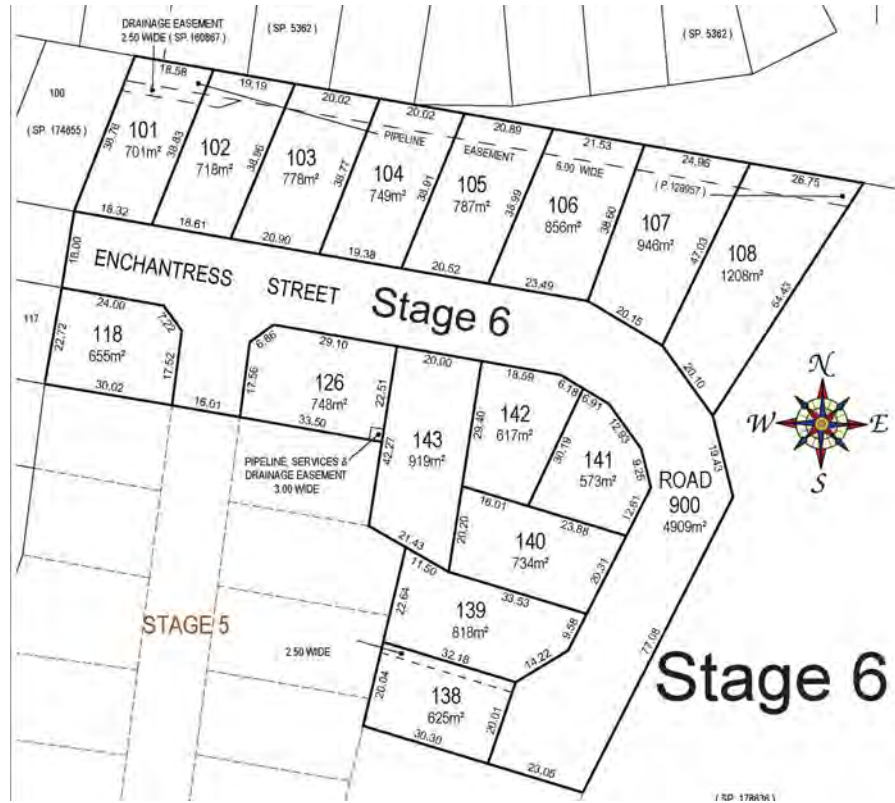


For most up to date prices view at: [northbay.net.au](http://northbay.net.au)

# NorthBaySubdivision Stage 6 Prices and Plans Titles have been issued

View at [northbay.net.au](http://northbay.net.au)

- 101 - **Sold**
- 102 - **Sold**
- 103 - **Sold**
- 104 - **Sold**
- 105 - **Sold**
- 106 - **Under offer Suit 2 Units STCA**
- 107 - **\$450,000 Suit 2 Units STCA**
- 108 - **\$695,000 Suit 3 Units STCA**
- 118 - **Sold**
- 126 - **Sold**
- 143 - **Under Contract**
- 142 - **Sold**
- 141 - **\$410,000**
- 140 - **Sold**
- 139 - **Sold**
- 138 - **Sold**



For most up to date prices view at: [northbay.net.au](http://northbay.net.au)

## North Bay Subdivision Stage 16C and 17 Prices and Plans



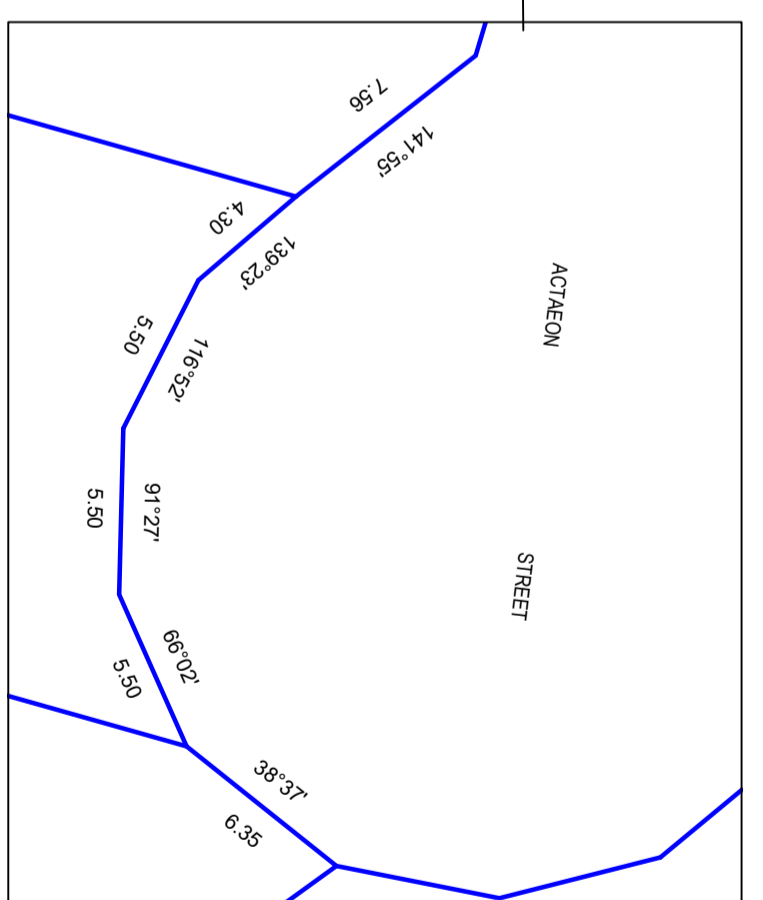
[View at northbay.net.au](http://northbay.net.au)

### STAGE 16C

- Lot 17 **SOLD**
- Lot 18 **SOLD**
- Lot 19/4 Lady Emma Court - **SOLD**
- Lot 20 **SOLD**
- Lot 21 **SOLD**
- Lot 22/4 Lady Emma Court - **\$430,000**



*For most up to date prices view at: [northbay.net.au](http://northbay.net.au)*



- LOT BOUNDARY
- EASEMENT BOUNDARY
- BANK TOP
- BANK BOTTOM
- DRAIN
- WATER COURSE
- HEADMALL
- CULVERT 150
- CULVERT 225
- CULVERT 300
- CULVERT 375
- CULVERT 450
- CULVERT 525
- CULVERT 600
- CULVERT 675
- CULVERT 750
- PIPELINE AND SERVICES EASEMENT 3.00 WIDE
- BITUMEN EDGE
- ROAD EDGE
- KERB LIP
- KERB INVERT
- KERB BACK
- FOOTPATH
- DRIVEWAY
- CONCRETE SLAB
- SEWER UNDERGROUND
- WATER MAIN
- WATER STOP VALVE
- FIRE HYDRANT
- METER WATER
- MANHOLE UNSPECIFIED
- DRAINAGE RESERVE
- WATER UNDERGROUND
- FENCE

**NOTES:**

While all reasonable effort has been made to locate all visible above ground services, there may be other services which were not located during the field survey.

The title boundaries as shown on this plan were not marked at the time of the survey and have been determined by existing title dimensions and occupation (where available) only and not by field survey, and as a result are considered approximate only. This plan should not be used for building to boundary, or to prescribed set-backs, without further survey.

Prior to any demolition, excavation, final design or construction on this site, a full site inspection should be completed by the relevant engineers.

All survey data is 3D. The level (z-value) of any specific feature can be interrogated with a suitable CAD package. Spot heights of all features, including pipe inverts, are included in the model space but are not displayed on the PDF. Spot heights are organised into appropriate layers, and can be displayed as required.

AMENDMENTS	
No.	Date

**LEARYCOX&CRIPPS**  
 LAND & ENGINEERING SURVEYORS

Unit G04 40 Mole Street,  
 HOBART TAS 7000  
 P 03 6118 2030  
 E admin@lcsurvey.com

Project Name and Address

**TOLLARD DR,  
 ENCHANTRESS ST&  
 ALABAMA ST  
 ROKEBY TAS 7019**

Drawing Title

**DETAIL PLAN**

Client

**Robert Howie**

SCALE

0 10 20 30 40  
 1:1000 at A2

Contour Interval		FILE REF:	
Date	0.200 m	Sheet	9851
29 / 09 / 22		1 of 1	
		DRAWN	GeoCAD Ref
			985101
			985101
			MGA2020
			AHD

## LOT NUMBERS and STREET ADRESSES

### Stage 4

Lot 146 is 18 Actaeon Street

### Stage 5

Lot 120 is 11 Alabama Avenue

Lot 121 is 9 Alabama Ave.

Lot 123 is 5 Alabama Ave.

Lot 131 is 6 Alabama Ave.

Lot 132 is 4 Alabama Ave.

### Stage 6

Lot 101 is 24 Enchantress Street

Lot 105 is 16 Enchantress Street

Lot 106 is 14 Enchantress St.

Lot 107 is 12 Enchantress St.

Lot 108 is 10 Enchantress St.

Lot 143 is 19 Enchantress St.

Lot 142 is 17 Enchantress St.

Lot 141 is 15 Enchantress St

Lot 140 is 13 Enchantress St.

Lot 139 is 11 Enchantress St.

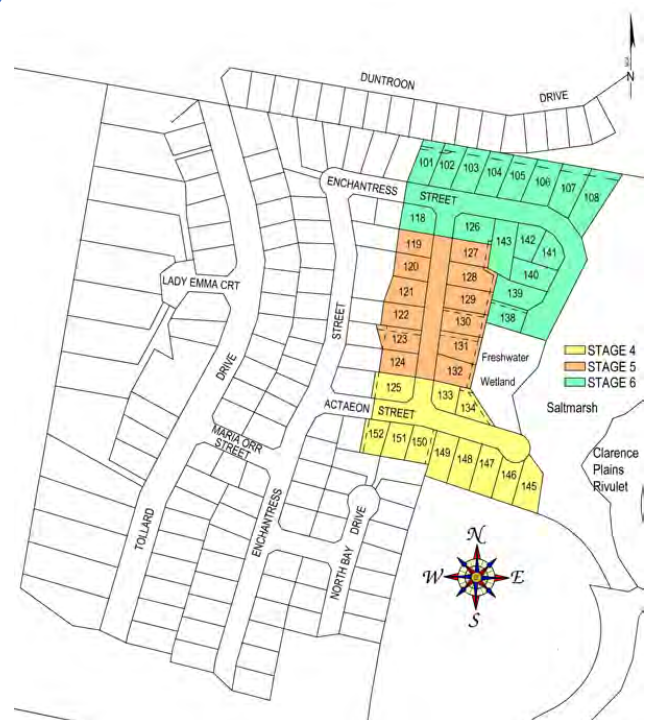
Lot 138 is 9 Enchantress St.



## *Directions to North Bay Subdivision*

Heading from city on the South Arm Highway turn right at the traffic lights and continue to the southern end of Tollard Drive

(About 15 mins. From CBD)



*For most up to date prices view at: [northbay.net.au](http://northbay.net.au)*